



**MUSA**MANAGEMENT

THE FUTURE IN MIND





## ABOUT US

Musa Management consists of a team of experienced Quantity Surveyors, dedicated to provide exceptional service to our clients. With more than 7 years of experience in the construction industry, we understand the importance of time, cost, and quality in achieving our clients' objectives.

We specialize in providing Quantity Surveying services to clients in the construction industry, from project inception to completion. Our team of experts are equipped with the knowledge and skills necessary to manage and control costs, ensure compliance with contractual obligations, and provide accurate and timely reports.

At Musa Management, we pride ourselves in our commitment to delivering high-quality services to our clients. We believe that by working closely with our clients and understanding their specific needs, we can help them to achieve their objectives and succeed in their projects.

Whether you're a developer, contractor, or homeowner, we are here to assist you in reaching your time, cost, and quality objectives. Contact us today to learn more about how we can help you succeed.

## OUR MISSION

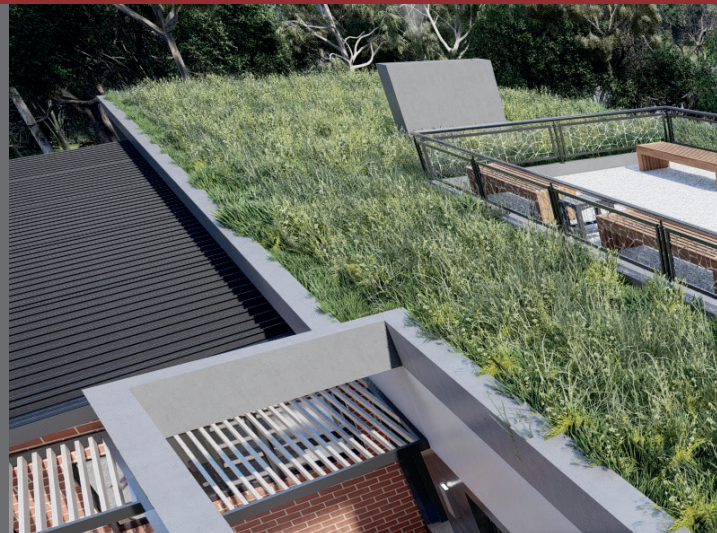
To assist our clients in achieving their project goals by implementing value engineering and cost reporting strategies that are tailor-made to their specific needs. We understand that every project is unique and requires a tailored approach to ensure its success.

## OUR VISION

To expand our footprint throughout South Africa and be the go-to provider of Quantity Surveying services for clients in our field, known for our exceptional service, innovative solutions, and commitment to helping our clients succeed.

## SERVICES WE RENDER

- 1 **Construction** Estimates
- 2 **Feasibility** Studies
- 3 Preparing **Bills of Quantities**
- 4 Advising on **Contractual Arrangements**
- 5 Compiling **Cash Flows**
- 6 Construction **Programmes**
- 7 **Cost Control** and **Value Engineering**
- 8 Preparing **Material Lists**
- 9 Final **Accounts**



## OUR VALUES







Meticulous to detail

Understanding our clients' goals

Success driven

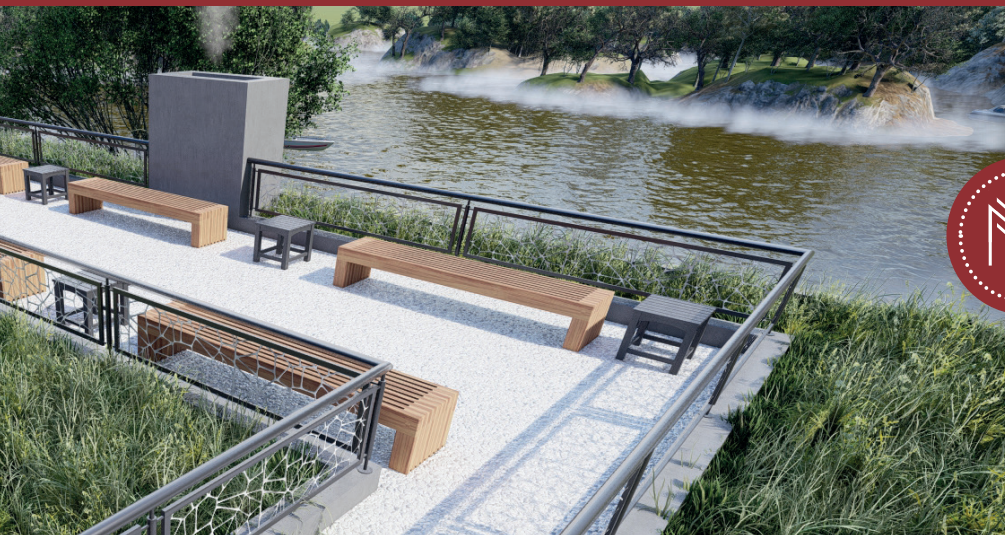
Adaptable to change

## INDUSTRIES WE WORK IN

-  Healthcare
-  Education
-  Commercial
-  Residential
-  Energy
-  Agriculture







## PREVIOUS PROJECTS

### RESIDENTIAL

- House on the River: Bothaville
- Renovation of Residential complex Estimate: Bloemfontein
- Construction Estimate: House Kennedy
- Alterations and Additions to Guesthouse and Entrance Gate
- Feasibility Study of New Residential Complex: Bloemfontein
- Estimate: House Cedrick
- New Residential Complex Lakes Village: Wild Olive Estate
- New Residential Complex Lakes Villas: Somerton Estate
- House Chakane: Wild Olive Estate

### COMMERCIAL

- New Retail Centre Feasibility Study: Kroonstad
- Repairs to Burned down Recycle Plant Estimate: Bloemfontein
- Estimate of Multi-Floor Student Accommodation: Bloemfontein
- Upgrading and Renovation to Existing Retail Centre
- Repair Works to Damaged Retail Centre
- Upgrading and Renovation of Existing Offices: Bloemfontein

### ENERGY

- Construction Estimate for New Petrol Station: Ladybrand

### AGRICULTURAL

- Estimate Construction of New Poultry Factory: Zeerust







## CONTACT US

**ARNO FERREIRA** PrQS 7105

+27 83 512 7357

arno@musamanagement.co.za

www.musamanagement.co.za

32 Veens Crescent, Universitas, Bloemfontein, 9301